

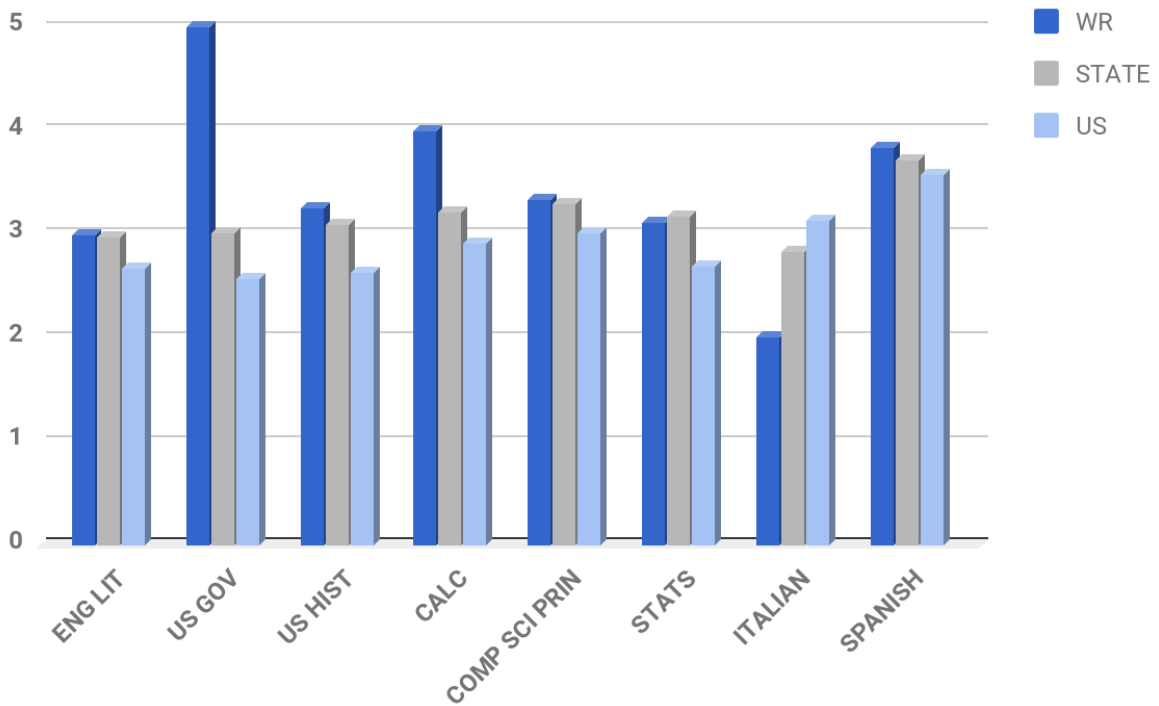
Wood-Ridge Public School District

Assessment Data for 2016-2017:
Advanced Placement (AP), SAT, PSAT,
and NJ ASK Science

ADVANCED PLACEMENT - COLLEGE BOARD
2017 AP MEAN SCORES

AP Scores 2017

Subject	English Literature	US Gov.	US History	Calculus	Computer Science Prin	Statistics	Italian	Spanish	Total Exams
WR Mean Score	3	5	3.25	4	3.33	3.11	2	3.83	3.44
NJ Mean Score	2.97	3.01	3.1	3.22	3.29	3.17	2.84	3.72	3.2
US Mean Score	2.68	2.58	2.64	2.91	3.02	2.69	3.13	3.58	2.84



OCTOBER, 2016

PSAT DATA

Grade 11: 101 students

Overall Score:	% of students	EBRW	% of students	MATH	% of students
1200 - 1260	5%			730	1%
1100-1190	10%	600-650	6%	600-690	3%
1000-1090	26%	500-590	39%	500-590	35%
900-990	24%	400-490	36%	400-490	40%
800-890	15%	330-390	20%	310-390	22%
700-790	15%				
650-690	6%				

Cohort Comparison

	<u>Class of 2017-11th grade PSAT</u>	% who met Benchmark	<u>Class of 2018-11th grade PSAT (Current SRs)</u>	% who met Benchmark	<u>Class of 2019-10th grade PSAT (Current JRs)</u>	% who met Benchmark as 10th graders
Total Score (320-1520)	955	44%	953	32%	911	45%
EBRW Score (160-760)	472	90%	480	58%	457	92%
Math Score (160-760)	483	44%	473	37%	454	45%
		10% met none		37% met none		8% met none

Current Grade 12 PSAT 2016 Fall Scores

	TOTAL	EBRW	MATH
School Mean(WR Gr 11)	953	480	473
State Mean	1000	499	500
National Mean	1019	514	506

SAT - EBRW (Evidence Based Reading Writing)

	2011	2012	2013	2014	2015	2016	2017
WOOD-RIDGE	471	478	454	491	483	471	536
STATE	495	495	499	501	500	495	539
NATIONAL	497	496	496	497	495	494	538

SAT - MATH

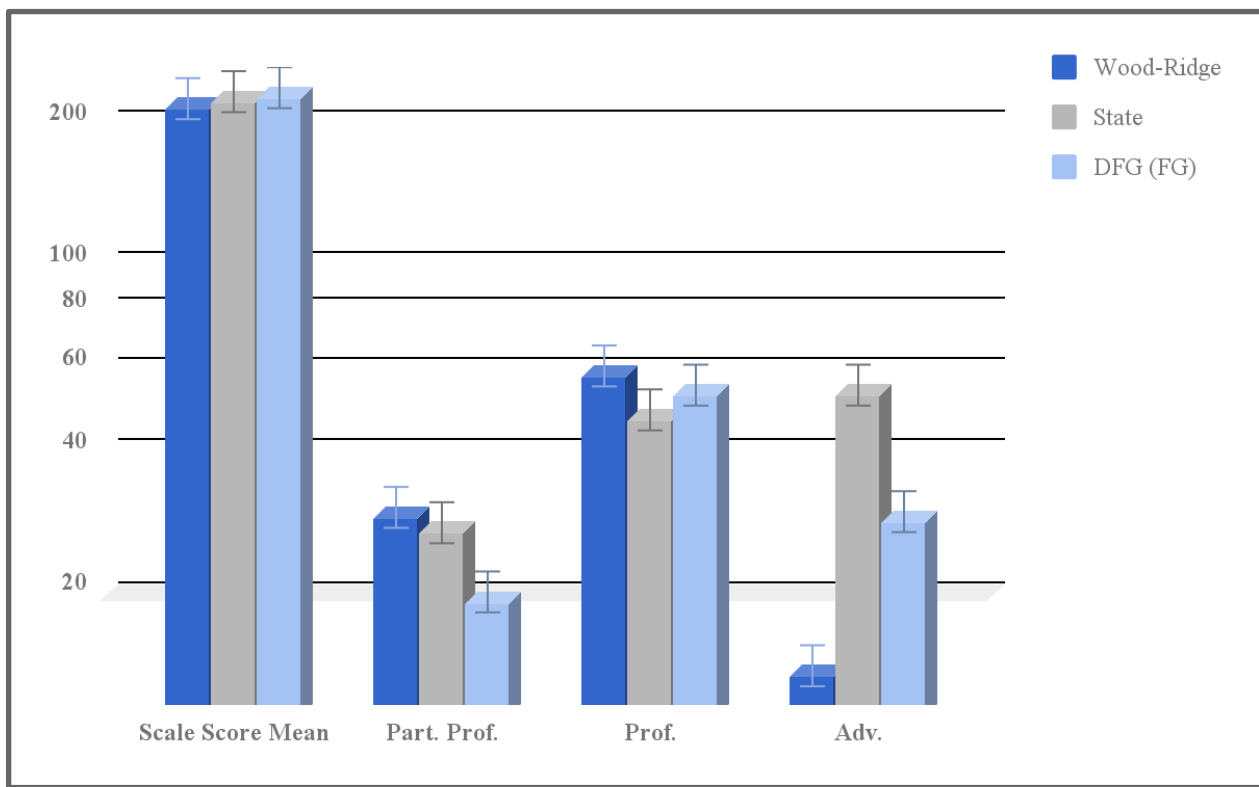
	2011	2012	2013	2014	2015	2016	2017
WOOD-RIDGE	504	492	490	487	488	485	540
STATE	516	517	522	523	521	514	537
NATIONAL	514	514	514	513	511	508	533

SAT - WRITING

	2011	2012	2013	2014	2015	2016	2017
WOOD-RIDGE	480	475	473	479	486	473	27
STATE	487	489	500	502	499	492	27
NATIONAL	489	488	488	487	484	482	27

NJ ASK Science 8 2017

	Scale Score Mean	Partially Proficient%	Proficient%	Advanced Proficient%
Wood-Ridge	214.1	28.9	57.8	13.3
State	221.6	26.8	46.6	26.6
DFG (FG)	226	19.1	52.6	28.3



NJASK Science 4 2017

	Scale Score Mean	Partially Proficient%	Proficient%	Advanced Proficient%
Wood-Ridge	243.1	9.3	44.2	46.5
State	238.5	14.4	40.1	45.4
DFG (FG)	246.7	8.2	37.8	54.0

